



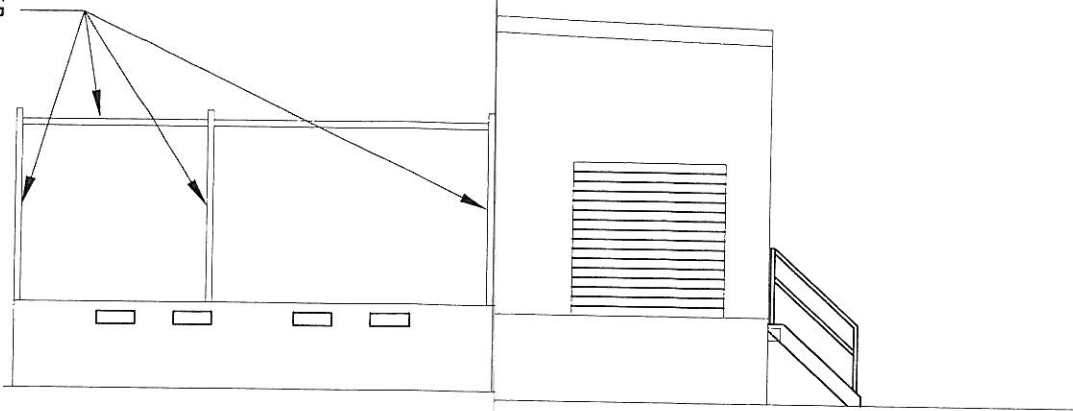
**PART III
FIGURE 1**

SITE LAYOUT PLAN

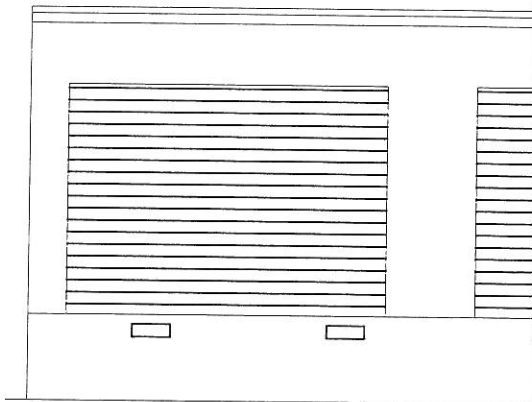


PART III
FIGURES 2A AND 2B
BUILDING ELEVATION VIEWS

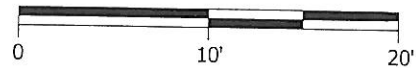
FRAMING
(OPEN)



ELEVATION



GRAPHIC SCALE



NO.	DATE	REVISIONS	BY
-----	------	-----------	----

PART III, FIGURE 2A
 BUILDING ELEVATION VIEWS
 STERICYCLE - EL PASO
 5307 EL PASO DRIVE
 EL PASO, TEXAS



engineers | architects | contractors

TBPE FIRM NO. F-366

WWW.LNVINC.COM

DRAWN BY: JR

APPROVED BY: ARH

DATE: 10/10/11

SCALE: AS SHOWN

U:\Tx Environmental Training & Compliance\110200\
 P001\Drawings\Figures\Part III, Figure 2.dwg

SHEET: 1 OF 1



No. 1 – South Elevation of loading/unloading dock.

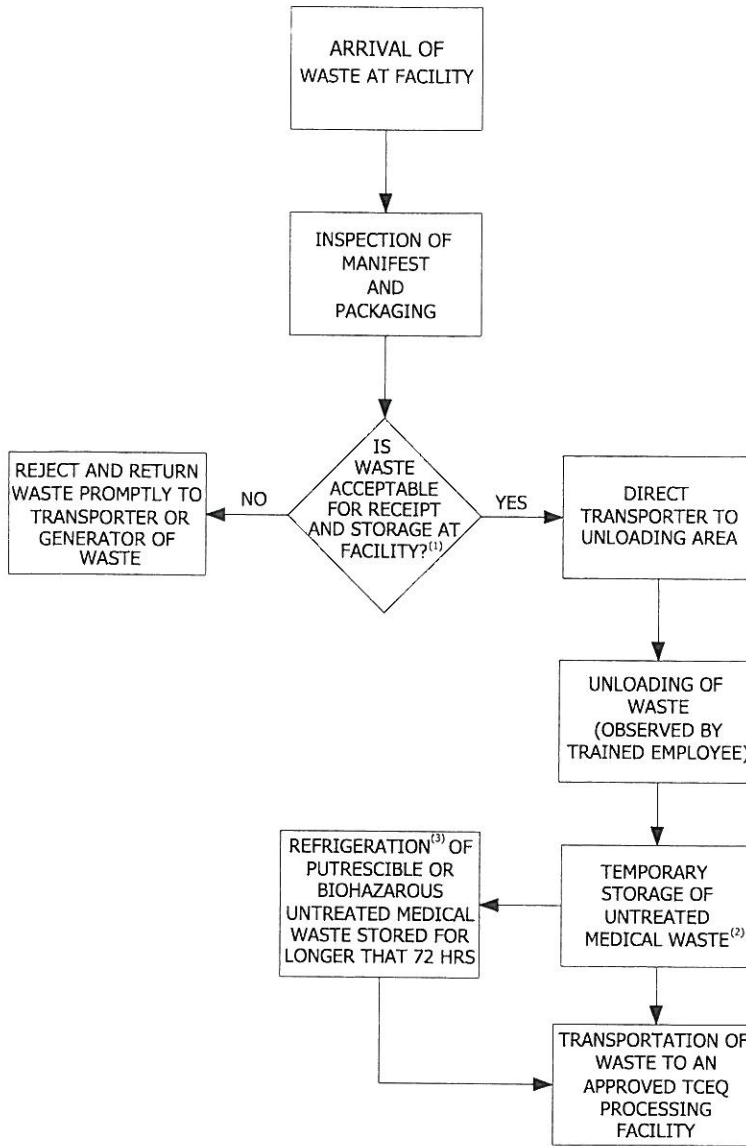


No. 2 – West Elevation of loading/unloading dock and enclosed storage building.



**PART III
FIGURE 3**

FLOW DIAGRAM



10/10/11


Amy R Hesseltnie
FOR REGISTRATION PURPOSES ONLY

NOTES:

(1) ACCEPTABLE WASTES FOR THIS FACILITY ARE MEDICAL WASTE, NON-HAZARDOUS PHARMACEUTICALS, ANIMAL AND PLANT HEALTH INSPECTION SERVICES (APHIS) REGULATED GARBAGE, AND CONFIDENTIAL DOCUMENTS.

(2) UNTREATED WASTE WILL BE STORED INSIDE AN ENCLOSED BUILDING, OUTSIDE IN A LOCKED TRANSPORT VEHICLE/ TRAILER OR IN A COVERED ROLL-OFF CONTAINER. NO WASTE WILL BE STORED WITHIN THE BUFFER ZONE OR ANY EASEMENT OR RIGHT-OF-WAY THAT CROSSES THE FACILITY.

3) 45° FAHRENHEIT OR LESS.

NO.	DATE	REVISIONS	BY
PART III, FIGURE 3 FLOW DIAGRAM STERICYCLE - EL PASO 5307 EL PASO DRIVE EL PASO, TEXAS			
			DRAWN BY: JR
<small>TBPE FIRM NO. F-366</small>			APPROVED BY: ARH
<small>WWW.LNVINC.COM</small>			DATE: 10/10/11
<small>U:\Tx Environmental Training & Compliance\110200.00\ P001\Drawings\Figures\Part III, Figure 3.dwg</small>			SCALE: AS SHOWN
			SHEET: 1 OF 1